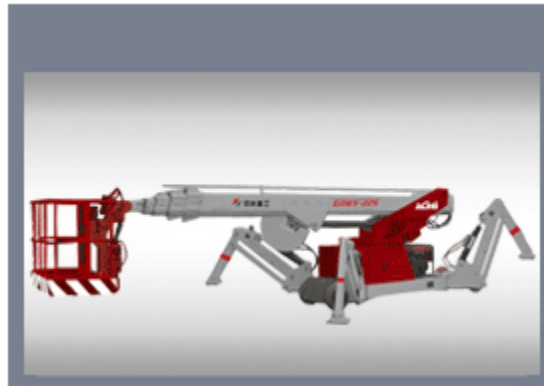
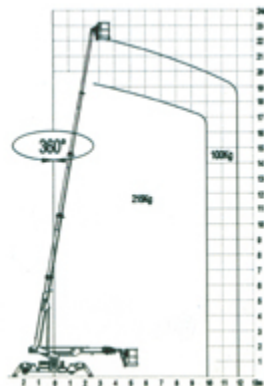


## GTBY22S



GTBY22S spider boom lift is compact, light and easily moved working platform. It is safe and reliable, equipped with dual power (engine and electromotor) and supported by four outriggers while working. It is good for indoor work in that light machine could not damage buildings, and outdoor work of building cleaning and maintenance. The spider boom lift is compactly stowed and can pass through narrow passageway and turn.

### Specification of GTBY-22S



Specification	GTBY22S
Machine weight(kg)	3850
Lifting capacity(kg)	215/100
Max. platform height(m)	18/22
Height-stowed(m)	1.9
Length-stowed(m)	7.9
Width-stowed(m)	1.6
Drive speed (m/s)	0.1—0.3
Telescopic speed(m/s)	≤0.5
Outrigger footprints(L*W)(m)	4.9 X4.1
Horizontal reach(m)	12
Platform dimension (L*W*H)(m)	1.5×0.8×1.1
Max. lateral force(N)	215N/100N
Axle base(m)	3
Min. turning radius (m)	8.7
Gradeability(% )	10.5
Turntable rotation(°)	360
Platform rotation(°)	±30
Safe working clearance(m)	0.2
Max. wind speed(m/s)	7.9