



# JCHI

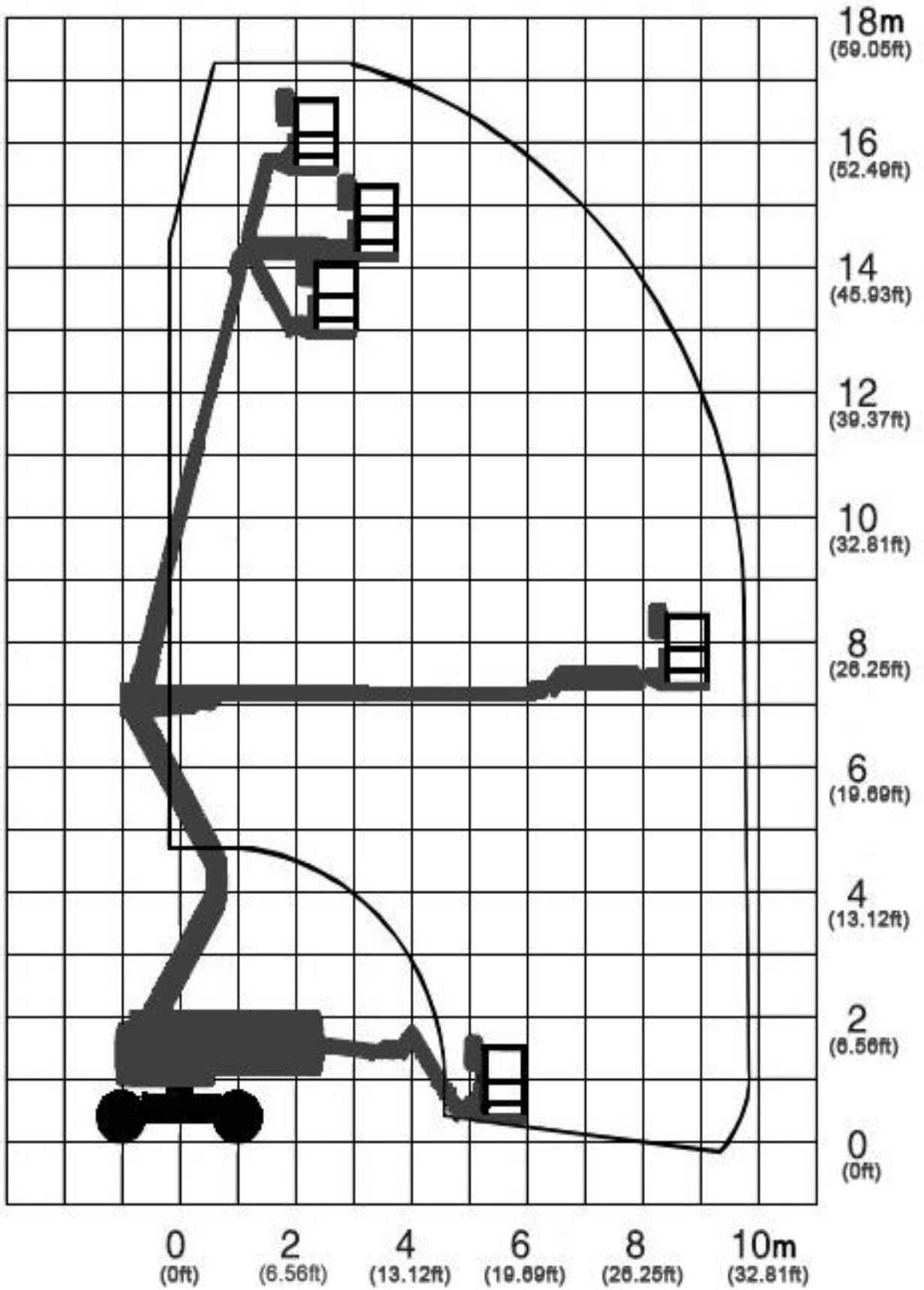
## AERIAL WORK PLATFORMS

## Articulated Boom Lifts

## GTQZ16

最大工作高度 Max. working height(m)	17.3
最大平台高度 Max. platform height(m)	15.5
工作幅度 Max. working reach(m)	10.5
最大工作高度时的幅度（距回转中心） Working reach at max. working height (to rotation center) (m)	4
规格尺寸 Dimensions(mm)	
(A) 总长Overall length	7500
(B) 总宽Overall width	2170
(C) 总高Overall height	2120
(D) 平台长Platform length	1800
(E) 平台宽Platform width	800
(F) 平台高Platform height	1355
(G) 轴距Axle base	2200
(H) 底车离地间隙Ground clearance	385
额定载荷 Lifting capacity(kg)	230
转台回转角度 Turntable rotation(°)	355 (non-continously)
工作平台回转 Platform rotation(°)	160
爬坡能力（臂架全缩） Gradeability(Boom fully retracted) (%)	45
工作温度 Working temperature(°C)	-20~40
最大行驶速度 Max. traveling speed(Km/h)	
臂架全缩 Boom fully retracted	6
臂架全伸 Boom fully extended	1
发动机功率 Engine power(KW)	37.3
系统电压 Voltage (V)	12
整机质量 Machine weight (kg)	7900

Working range





DTGV-420

DTGV-420

DTGV-420

DTGV-420

DTGV-420



DTGV-420

DTGV-420

DTGV-420

DTGV-420

DTGV-420



**Beijing Jingcheng Heavy Industry Co. Ltd.**

2, Chuangyeyuan Road,  
Xinghu Industrial Garden, Taihu Town,  
Tongzhou District, 101116, Beijing,  
P. R. China  
Tel: 86 10-6153 9210  
[www.jchic.com](http://www.jchic.com)  
[sales@jchic.com](mailto:sales@jchic.com)



\*Contact us for configuration details and performance.  
JCHI reserves the right to modify specifications without prior notification.