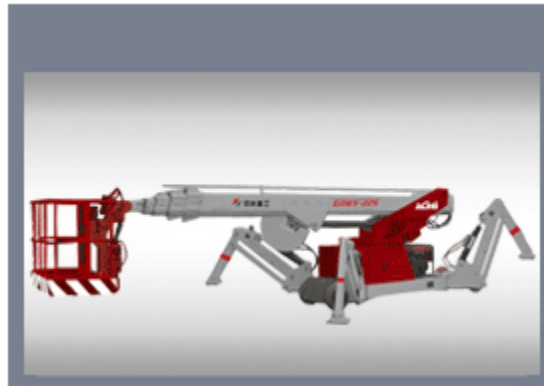
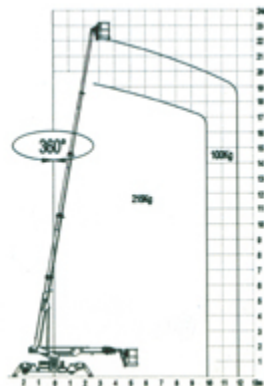


GTBY22S



GTBY22S spider boom lift is compact, light and easily moved working platform. It is safe and reliable, equipped with dual power (engine and electromotor) and supported by four outriggers while working. It is good for indoor work in that light machine could not damage buildings, and outdoor work of building cleaning and maintenance. The spider boom lift is compactly stowed and can pass through narrow passageway and turn.

Specification of GTBY-22S



| Specification | GTBY22S |
|-------------------------------|-------------|
| Machine weight(kg) | 3850 |
| Lifting capacity(kg) | 215/100 |
| Max. platform height(m) | 18/22 |
| Height-stowed(m) | 1.9 |
| Length-stowed(m) | 7.9 |
| Width-stowed(m) | 1.6 |
| Drive speed (m/s) | 0.1—0.3 |
| Telescopic speed(m/s) | ≤0.5 |
| Outrigger footprints(L*W)(m) | 4.9 X4.1 |
| Horizontal reach(m) | 12 |
| Platform dimension (L*W*H)(m) | 1.5×0.8×1.1 |
| Max. lateral force(N) | 215N/100N |
| Axle base(m) | 3 |
| Min. turning radius (m) | 8.7 |
| Gradeability(%) | 10.5 |
| Turntable rotation(°) | 360 |
| Platform rotation(°) | ±30 |
| Safe working clearance(m) | 0.2 |
| Max. wind speed(m/s) | 7.9 |